

ST | SOFTTECH

ST | SPIRIT

What's new 2023

## Copyright, Legal Notice

All Rights reserved. No part of this document may be reproduced in any form (print, photocopy or any other process) without the written permission of STI International, Inc. or processed using electronic systems, duplicated or distributed.

All technical details in this document were developed by STI International, Inc. with the greatest care and compiled and reproduced using effective control measures. Errors nevertheless cannot be completely ruled out. STI International, Inc. is therefore obliged to inform you that it assumes no guarantee, legal responsibility or liability for any consequences arising due to erroneous information. STI International, Inc. is always thankful and grateful for informing us of any errors.

SPIRIT, GRAVA and AVANTI are registered trademarks of SOFTTECH AG. All other brand and product names are Trademarks or Registered Trademarks of other companies.

Windows® is a Registered Trademark of Microsoft Corporation©

Photo credits: SOFTTECH GmbH, unless otherwise specified.

---

STI International, Inc.  
114 Franklin Street  
Concord, NH 03301

Telephone +1(603) 369 3019  
Fax +1(206) 274-7256

E-Mail [info@softtech.de](mailto:info@softtech.de)  
[www.softtech.de/en](http://www.softtech.de/en)


---

# Table of Contents

Adaptions – Layer Manager – Depiction of locked layers.....	4
Adaptions – New variable hight reference .....	6
Adaptions – Plot to PDF – Files in PDF version 1.6 (Acrobat 7.x) .....	8
Adaptions – Units of measurement in OI.....	9
Adaptions – Improved performance for imported 3D elements.....	11
Functions – Architectural system – Rooms with free definition .....	13
Functions – Create Style files more easily.....	14
Functions – Save Style files more easily .....	15
Data exchange – IFC – IFC-Manager .....	16
Data exchange – IFC Export – IFC Operation Type for doors.....	18
Data exchange – IFC Export – IFC-Type for Cost elements .....	20
SPIRIT 2022.04 – Revised IFC import .....	21
SPIRIT 2022.04 – Connection to DBD BIM.....	22
SPIRIT 2022.04 – Dimension scaling .....	23

## Note

The following pages describe the new features of the current version. All new features apply exclusively to SPIRIT, provided the corresponding licensed program sections are available on the user's/customer's computer.

 For more information, please refer to the online help. The new features are listed on the start page and are linked to the respective chapter, where the feature is explained in detail.

# Adaptions – Layer Manager – Depiction of locked layers

Highlight in colour or fade content

## Description

For a better overview on the drawing area, the contents of locked layers can be highlighted in colour or shown faded in SPIRIT 2023.

## Function

If the display type “Standard” is selected for the drawing area, the display of the content of locked layers can be adjusted in the slide manager.

Depending on the setting of the option **No selection on locked layers** it is possible to highlight or fade the contents of locked layers. For better access to this option, a switch has been added to the slide manager.



### No selection on locked layers – Transparency slider available

If this option is not active (1) the transparency of elements on locked layers can be adjusted with a transparency slider (2). The value can be set from 0 % to 80 %.

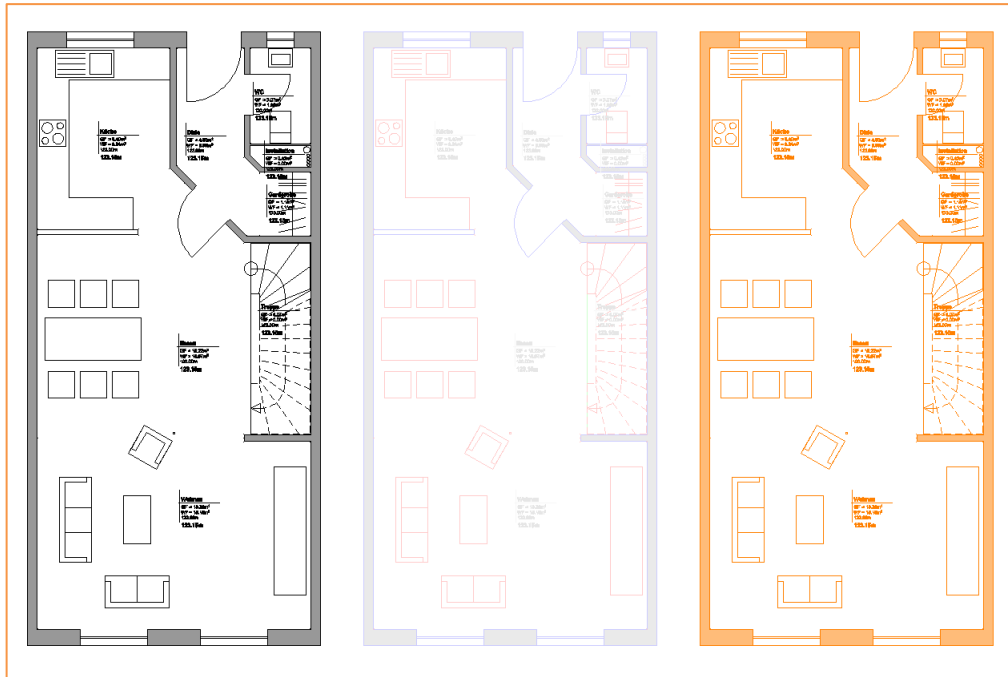


### Selection on locked layers – Colour selection menu available

If this option is not active (3) a colour menu can be opened via a corresponding switch (4) and a colour for the content of locked layers can be set. Fillings and lines are displayed with different saturation.

A combination of both display options is not possible. These adjustments are also not visible in the layout view.

## SPIRIT 2023 – What's new



Locked layers – Layout view, Standard view faded and highlighted in colour

### Value

- ✓ Contents of locked slides can be highlighted in colour
- ✓ Contents of locked slides can be faded
- ✓ Existing content can easily be displayed for comparison or as a basis for drawing

# Adaptions – New variable high reference

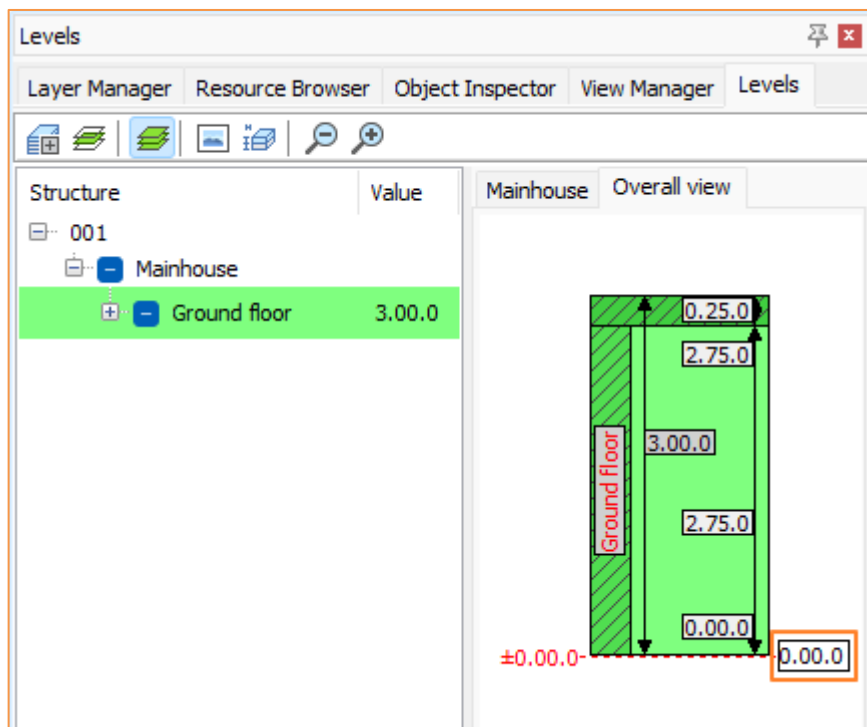
Addition to the sport height function

## Description

As a supplement to the elevation system published with SPIRIT 2022, a global elevation reference can be defined with SPIRIT 2023. With this the height of a terrain point can be set as a reference, above sea level for example.

## Function

The elevation reference can be entered in the dockable dialog “Levels” and in the “Reference point” menu and changed at any time.



Input box for the hight reference in the dockable dialog “Levels”

Existing reference points in as-built drawings can be linked to this new value. A new option is available in the menu for editing datum points.

If this option is activated, the new height reference is used for the reference. If this option is not active, the elevation stored at the reference point is used.

Annotate

F1 ☒ Section

F2 ☐ Rotated section

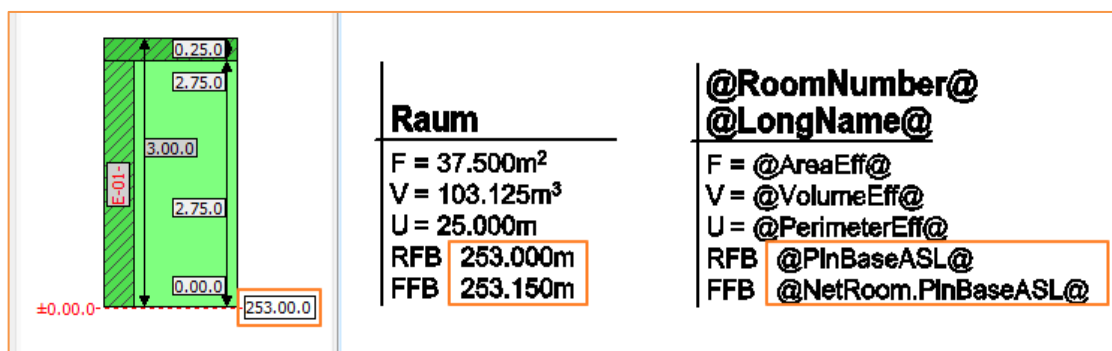
F3 ☐ Floor plan

Heightening

F5 ☒ Height reference

“Height reference” in >Annotate >Sport height >Reference points >Edit

With two new room stamp variables, the altitude of a room can be displayed in the room stamp in relation to this value:



New room stamp variables

## Value

- ✓ Variable to set a height reference
- ✓ Changes to this value are propagated to all linked variables
- ✓ New room stamp variables to display the elevation of rooms

# Adaptions – Plot to PDF – Files in PDF version 1.6 (Acrobat 7.x)

Output format when printing to PDF updated to PDF version 1.6

## Description

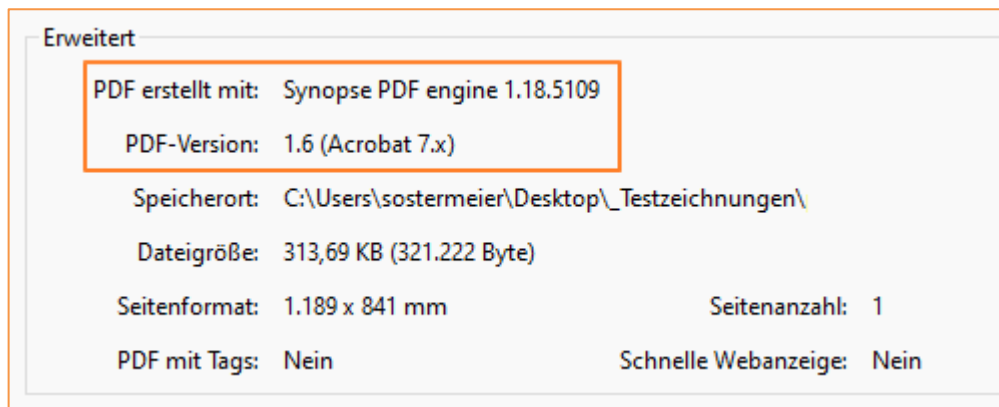
---

The Synopsis PDF engine used by SPIRIT has been updated.

## Function

---

PDF files created via Print to PDF are now created in PDF version 1.6 (Acrobat 7.x).



Properties of the PDF file in Acrobat Reader

## Value

---

- ✓ Updated PDF Engine
- ✓ PDF files in PDF version 1.6 (Acrobat 7.x)



# Adaptions – Units of measurement in OI

Capture quantities faster in the Object Inspector

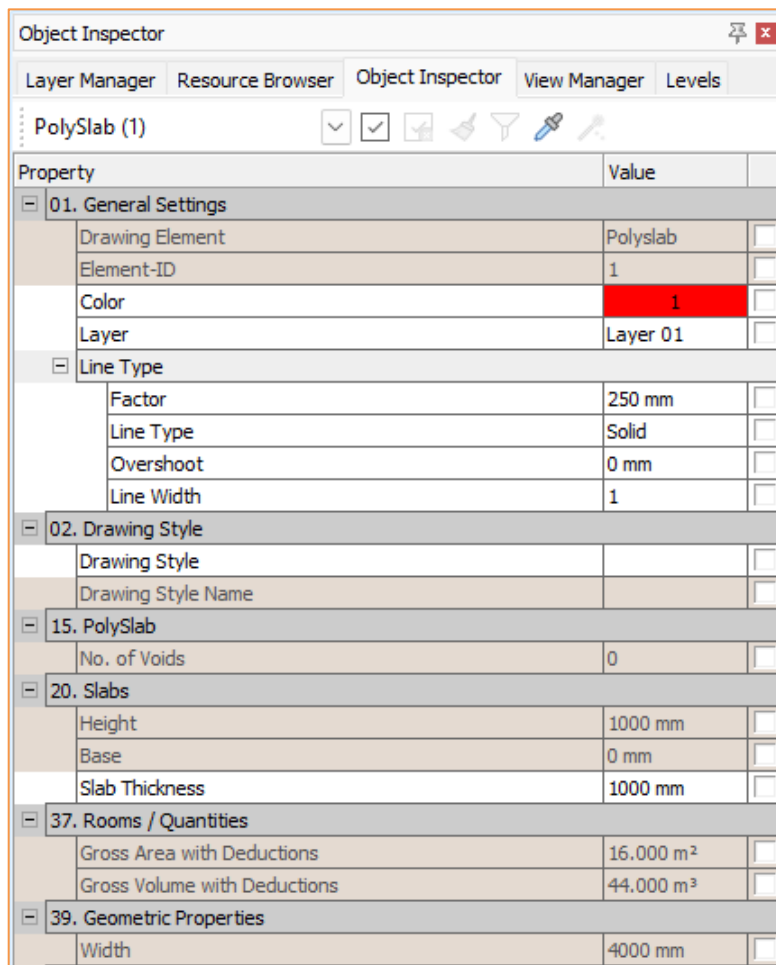
## Description

The display of measurement units in the object inspector has been revised in SPIRIT2023

## Function

For metric units of measurement, all areas are displayed in m<sup>2</sup> and all volumes in m<sup>3</sup>. This also applies if, for example, mm is set as the unit of measurement. To make this clear, the unit of measurement is always displayed for areas and volumes.

Length information is displayed in the OI in the set unit of measurement. **New:** in SPIRIT2023, the units of measurement can optionally be displayed here if the option “Units” is activated in the menu Scale Type.



## Units in OI

## Value

---

- ✓ Areas are always displayed in m<sup>2</sup> and with units in the OI
- ✓ Volumes are always displayed in m<sup>3</sup> and with units in the OI
- ✓ Length information is optionally displayed with units in the OI
- ✓ Better traceability of the values

# Adaptions – Improved performance for imported 3D elements

So that you can see what you are doing

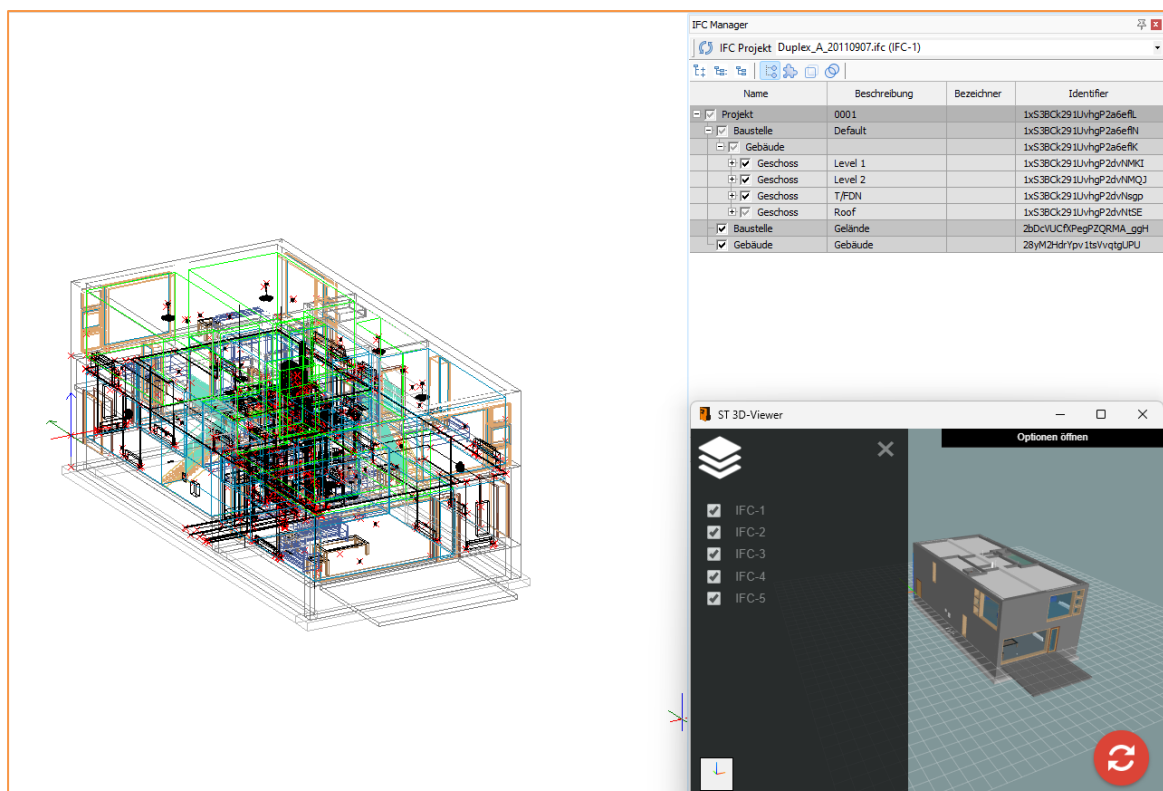
## Description

Importing 3D models via DWG or IFC is becoming increasingly important. As part of the revision of the IFC interface, general improvements in the handling of 3D elements were also made.

## Function

Some optimizations have been made to import complex and elaborate 3D models into SPIRIT and then display them.

Multiple IFC models can also be imported and overlaid as references. The dockable dialog can be used to switch between these references and highlight individual elements.



Imported and overlaid IFC models in the isometric and ST 3D viewer

## Value

---

- ✓ Multiple IFC models can be imported and overlaid
- ✓ Even more complex 3D models from DWG files are displayed more efficiently

# Functions – Architectural system – Rooms with free definition

The “Free Definition” option no longer needs to be activated again and again.

## Description

Rooms can be created in SPIRIT without surrounding walls or lines. If necessary, the “Free definition” option can now be permanently activated and worked in this way.

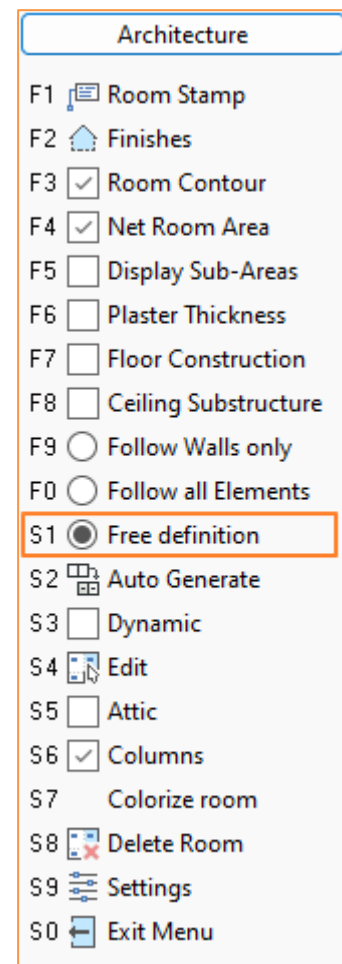
## Function

In order to create spaces with “Free definition”, this previously had to be reactivated each time it is called.

With SPIRIT2023 this option remains active, such as “Follow Walls” or “Follow Elements”, for as long as another option is activated.

If room contours are neither limited of walls nor of closed lines, they can be created more quickly in this way.

This may be the case, for example, if floor plans are available as DWG, PDF, Image file or IFC.



Modified menu >Architecture >Room

## Value

- ✓ The option “Free definition” option no longer needs to be activated again and again
- ✓ Quick room area determination even without a building model

# Functions – Create Style files more easily

Selection of the drawing element is no longer necessary.

## Description

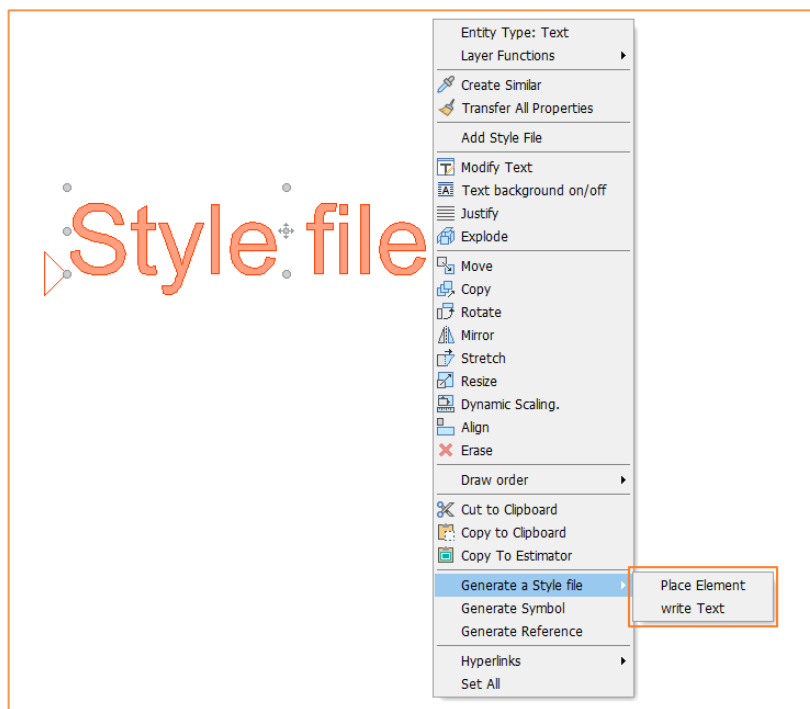
Using Style files can speed up your daily work. A Style file can also be provided with additional information.

With SPIRIT 2023, creating your own Style files has been simplified.

## Function

When creating Style files in SPIRIT 2023 you no longer have to select from a list which element should be created.

A new drawing style is now automatically created based on the selected element. The only additional option available is “Place element”.



Reduced submenu „Generate a Style file“ in the context menu

## Value

- ✓ Create Style files faster
- ✓ Prevent creating incorrect Style files

# Functions – Save Style files more easily

Path settings for Style files optimized and expanded.

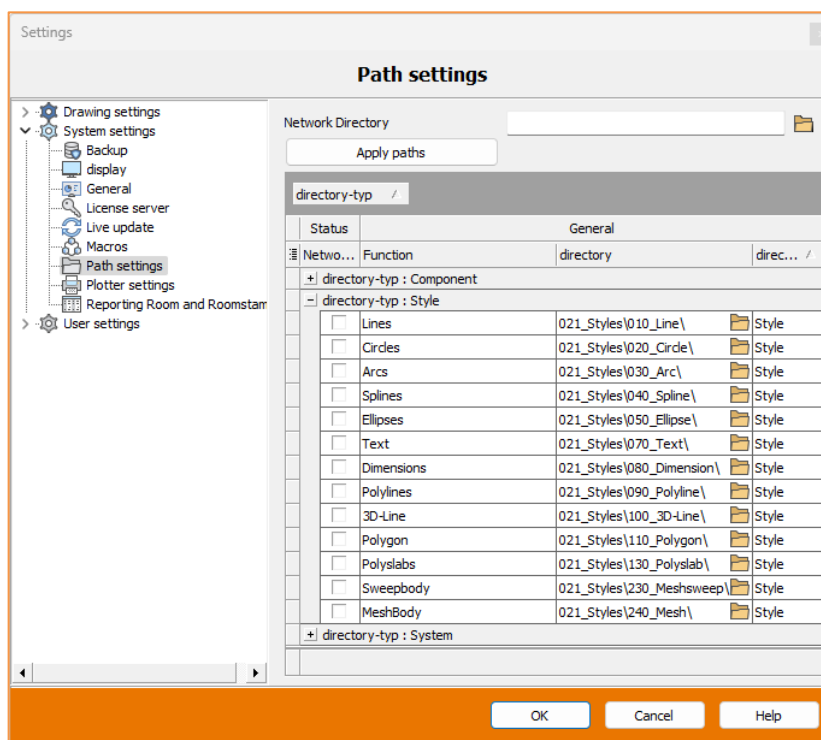
## Description

Not only creating your own Style files was made easier in SPIRIT 2023, but also saving them. A standard storage path can now be defined for all Style file types.

## Function

With SPIRIT2023, the storage paths of the Style files can be defined more precisely in the path settings.

Previously, only the storage paths for lines, texts, dimensions, sweep bodies and mesh bodies could be defined here. Now the standard paths for storing all other Style files can also be defined.



Expanded path settings for Style files

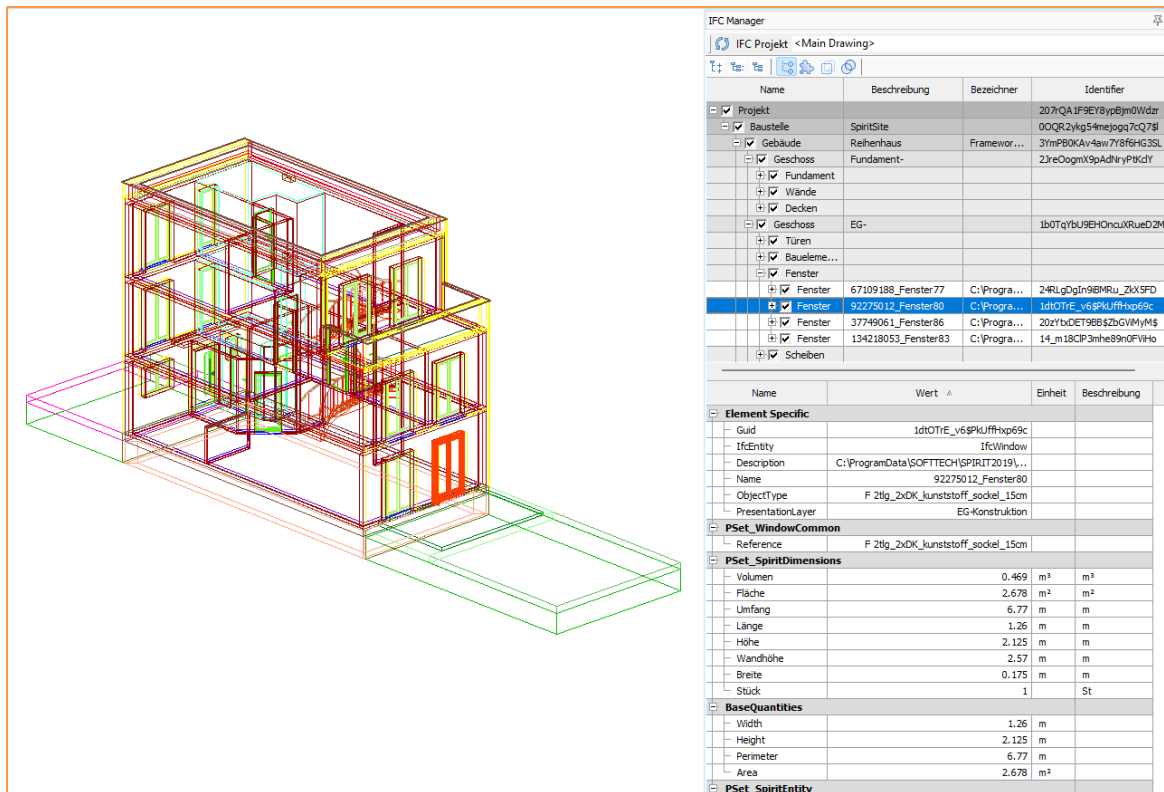
## Value

- ✓ Create Style files faster
- ✓ Better control when saving Style files





## SPIRIT 2023 – What's new



SPIRIT model in IFC-Manager with selected and highlighted window

### Value

- ✓ Overview of all imported IFC models
- ✓ Check IFC properties of the current drawing before export to IFC

# Data exchange – IFC Export – IFC Operation Type for doors

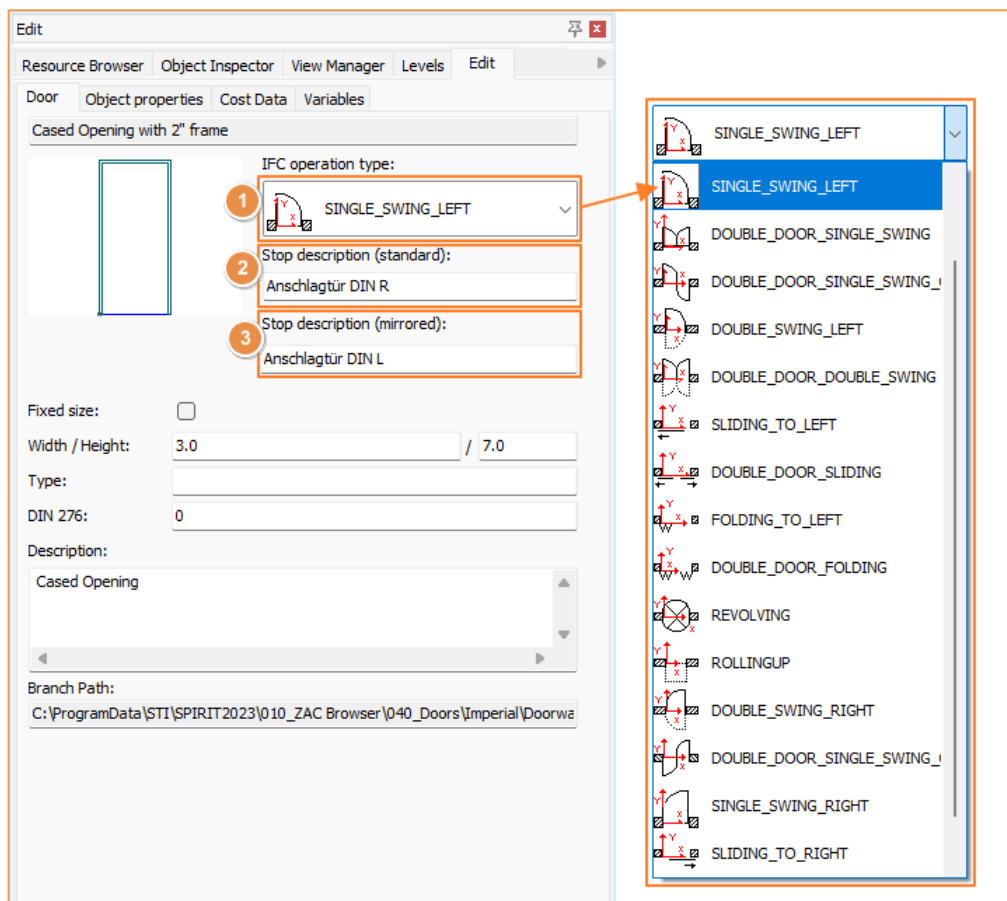
IFC-Operation-Type and stop description for doors.

## Description

For exchange data via IFC, doors can be provided with an IFC operation type in SPIRIT 2023.

## Function

An IFC function type (1) can now be selected on door components via a new selection window. As part of this change, a function was also implemented to set a stop description for the door (2), e.g. according to DIN in Germany.



IFC operation type and stop description in door

A second stop description (3) can be set for mirrored doors; the IFC function type is automatically corrected.

## Value

---

- ✓ IFC-operation type for doors
- ✓ Stop description for doors
- ✓ Mirrored doors are also supported

# Data exchange – IFC Export – IFC-Type for Cost elements

An IFC type can be assigned to cost elements

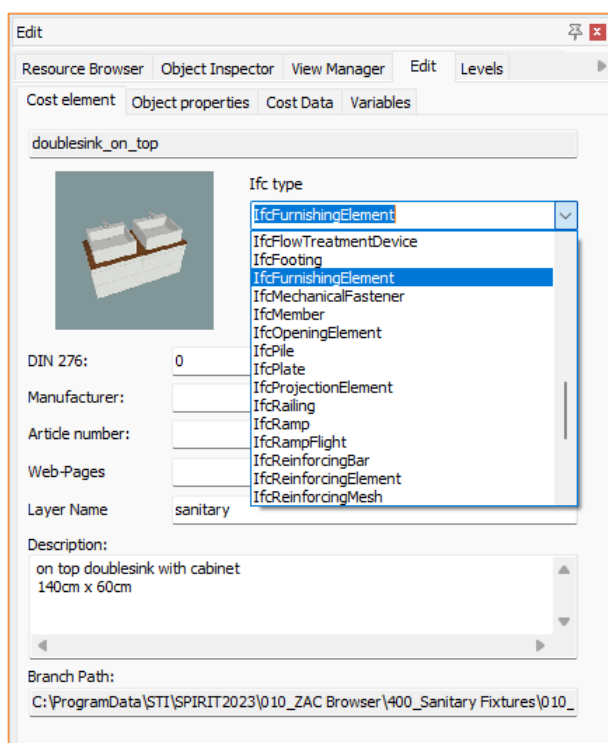
## Description

An IFC type can now be assigned to Cost elements from a selection list.

## Function

An IFC type can be assigned from a selection list in the opened Cost element. The graphical representation in 2D and 3D can be freely defined. It is also possible to create variables in the cost element and assign costs to it.

By doing so IFC elements can be created for which no ZAC elements are currently available in SPIRIT.



IFC Type in Cost element

## Value

- ✓ IFC Type in cost elements

## SPIRIT 2022.04 – Revised IFC import

IFC models can be imported as reference file and can be overlaid

### Description

---

A revised IFC import is available with SPIRIT2022.04.

IFC files of versions IFC2x3 and IFC4 can now be imported as reference files. The imported model can be used as a basis for your own drawings or analyzed in detail in the IFC Manager for comparison in your own planning.

### Function

---

When importing an IFC file, you can now choose between "Import as reference" and "Translate into SPIRIT model" (corresponds to the old IFC import).

Multiple models can be imported and overlaid. Content that is not required can be hidden in the IFC Manager.

### Value

---

- ✓ IFC models can be imported as reference file
- ✓ Multiple IFC models can be overlaid
- ✓ New dockable dialog "IFC Manager"

## SPIRIT 2022.04 – Connection to DBD BIM

DBD BIM Manager as a dockable dialog and improved data exchange

### Description

---

The DBD BIM Manager is now available as a dockable dialog for selecting positions from DBD.  
Data exchange between DBD BIM and SPIRIT has also been improved.

### Function

---

The connection to DBD BIM is shown in a dockable dialog. This can be positioned freely and is opened automatically when a position is assigned.

If the DBD BIM Manager is called from the position of a component, the appropriate components are automatically displayed in the dockable dialog. The cost group stored on SPIRIT components according to DIN 276 is transferred to DBD BIM as a search term.

When exporting to IFC, DBD BIM keys are now also exported, which can be used to create components from the IFC model in AVANTI and other applications for sampling

### Value

---

- ✓ DBD BIM Manager as a dockable dialog
- ✓ Improved data exchange between SPIRIT and DBD BIM
- ✓ DBD-BIM-Key is passed when exporting to IFC

## SPIRIT 2022.04 – Dimension scaling

Enter dimension scale directly or determine via reference

### Description

---

In SPIRIT, drawing content can be compiled in different scales in a layout using the reference technique.

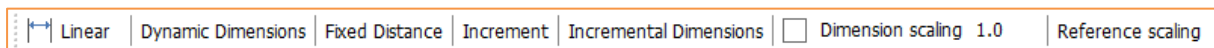
With a scaled dimensioning, such a composition can easily be provided with a uniform dimensioning.

### Function

---

Dimension scaling allows the length of a dimension to be adjusted to different scales. Previously, this was only possible later using the object inspector.

With the current update, the dimension scaling can be activated directly when entering via the context bar and the desired factor can be entered.



### New dimension context bar

With the new "From Reference" function, the correct scaling factor can be adopted from an existing reference with a mouse click.

In this way, a plan with content in different scales can be conveniently dimensioned uniformly.

### Value

---

- ✓ Direct manual input of dimension scale
- ✓ Easy takeover of a dimension scale from a deposited reference
- ✓ Easy dimensioning in the same layout of references in different scales