

ST | SOFTTECH

ST | SPIRIT

What's new 2024

Copyright, Legal Notice

All Rights reserved. No part of this document may be reproduced in any form (print, photocopy or any other process) without the written permission of STI International, Inc. or processed using electronic systems, duplicated or distributed.

All technical details in this document were developed by STI International, Inc. with the greatest care and compiled and reproduced using effective control measures. Errors nevertheless cannot be completely ruled out. STI International, Inc. is therefore obliged to inform you that it assumes no guarantee, legal responsibility or liability for any consequences arising due to erroneous information. STI International, Inc. is always thankful and grateful for informing us of any errors.

SPIRIT, GRAVA and AVANTI are registered trademarks of SOFTTECH GmbH. All other brand and product names are Trademarks or Registered Trademarks of other companies.

Windows® is a Registered Trademark of Microsoft Corporation©.

Photo credits: SOFTTECH GmbH, unless otherwise specified.

SOFTTECH GmbH
Maximilianstraße 39
67434 Neustadt

Telephone +49 6321 939-0
E-Mail info@softtech.de
www.softtech.de/en

Doku-Nr.: SWN-CAD-2024, Effective: 5/23/2024

Table of Contents

The innovative SOFTTECH license manager	4
Adjustments - room stamps and object stamps with reference line	6
Adjustments - Selection tool for drawing objects	8
Adjustments - Save drawing as a preliminary run	9
Adjustments - Display of color values	11
Adjustments - Search function available in tables	12
Working with references - reference point when setting down	14
Working with references - Free contour	16
DWG import and export - New dialog	17
DWG import and export - Export of SPIRIT components	18
IFC - Transfer layer structure	19
Changes and adjustments SPIRIT 2024	20
Add-on NASreader - GeoInfoDok Version 7.X *	21
Add-on Fire protection planning with SPIRIT 2024 *	23

The innovative SOFTTECH license manager

Flexible license management, no dongle, no stress: the key to a new era of license management



Quelle: © fotogestoeber / AdobeStock

Description

In the constantly evolving world of construction software, it is not only the performance of the tools that is crucial, but also the way in which you access them. That's why we present SPIRIT 2024, our new SOFTTECH License-Manager - a modern solution for flexible and stress-free management of your licenses.

No more annoying dongles! The ST License Manager allows you to manage your licenses online without having to deal with plugging in copy protection plugs or the tedious importing of license files. Licensing has never been easier - direct, convenient and without time-consuming detours.

Switching between different licenses, be it between the "plan" and "pro" editions, becomes child's play. The ST License Manager offers a seamless and intuitive user interface that allows you to navigate flexibly between different license options. The administration is not only user-friendly, but also state-of-the-art and GDPR-compliant.

Cloud-based license management also brings more flexibility to your work. Work from different locations, switch effortlessly between the office and home office and even between different editions, all without losing focus on your project. The SOFTTECH License-Manager is not just a tool, it is your reliable companion for smooth license management.

The ST License Manager will also be available in the SPIRIT 2023 and SPIRIT 2022 versions so that you can continue to work on your projects seamlessly and without interruption in the latest SPIRIT versions.

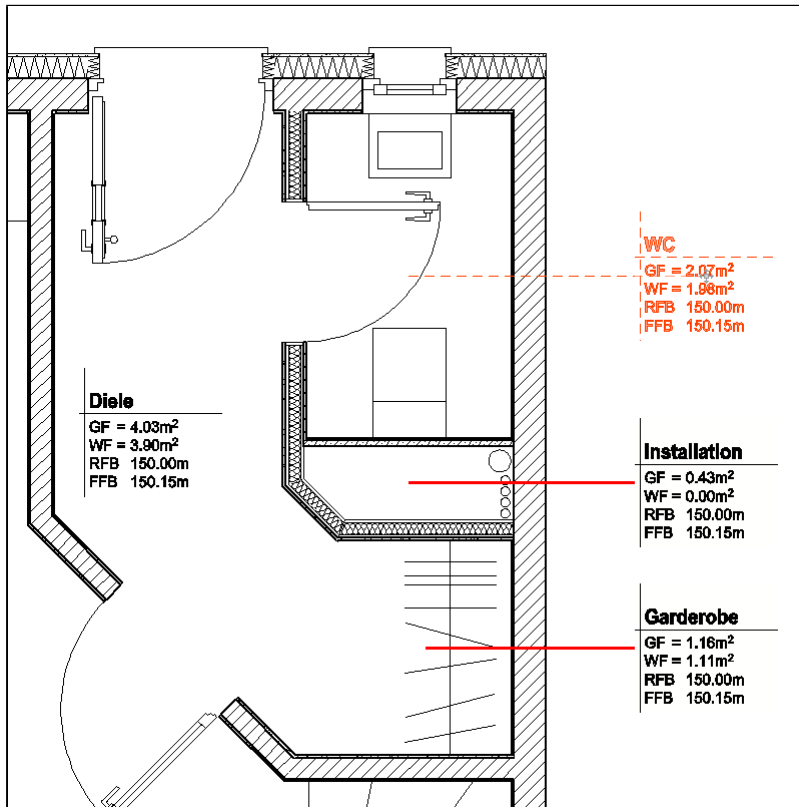
SOFTTECH Support is now available to help you with licensing problems even faster and more effectively. This means shorter response times and more time for what is really important - your construction project.

Benefit

- ✓ **Stress-free license management:** Forget dongles and annoying license files. The SOFTTECH License-Manager enables simple online license management directly from the software.
- ✓ **Flexible working models:** Switch effortlessly between different licenses and editions. Cloud-based license management allows you to work flexibly from different locations and supports home office concepts.
- ✓ **Fast support:** SOFTTECH Support is there to help you directly. If you have licensing problems, you will receive fast and effective help so that you can concentrate on the essentials.

Adjustments - room stamps and object stamps with reference line

Better legibility of floor plans and more flexibility in plan layout



SPIRIT 2024: Raumstempel mit sichtbarer Stempelverbindung

Description

Previously, the reference line between the room and object stamp was only displayed temporarily when the stamp or element was selected. With SPIRIT 2024, this connecting line can be displayed permanently.

The "Show stamp connection" option can be switched on or off in the object inspector for stamps. This property can be transferred using the format brush. The reference line is displayed in the element color and according to the line type properties of the stamp. It directly spigots the center point of the stamp and the object.

A hidden background or color fillings in the stamp cover the reference line.

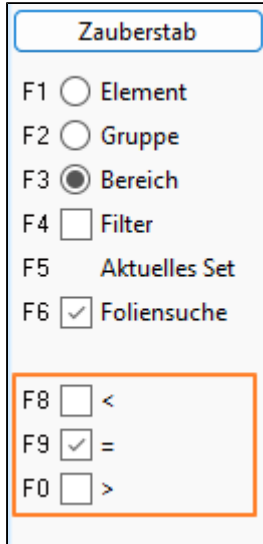
Benefit

- ✓ **Better plan readability:** The reference line makes it directly visible to which element a room or object stamp belongs.

- ✓ **More freedom in plan layout:** room stamps can also be arranged outside the actual floor plan without having to create manual reference lines.

Adjustments - Selection tool for drawing objects

Selecting SPIRIT 2D elements via min. and max. value



SPIRIT 2024: Screenshot Menü "Zauberstab"

Description

It can always happen that similar drawing elements with different properties have to be selected. It can also happen that elements appear to have identical values. However, these can deviate from each other in the high decimal place range.

In order to select such elements based on their element properties, the "Magic wand" selection tool has been expanded to include simple filters.

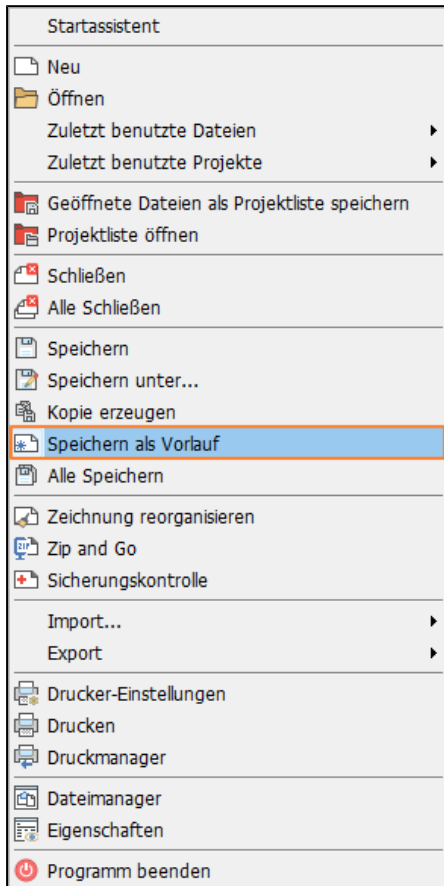
When using the "Magic wand", the filter options "Smaller", "Equal" and "Larger" are now available. All elements that correspond to the filter can be selected via an area selection. The elements selected in this way can now be edited together using the object inspector.

Benefit

- ✓ **Quickly find and adapt similar elements:** Elements with slightly different properties can be quickly selected and changed.
- ✓ **Simple filter functions:** The selection can be controlled using the simple filters "Smaller", "Equal" and "Larger".

Adjustments - Save drawing as a preliminary run

Where should I save my pre-recordings? SPIRIT knows the location



SPIRIT 2024: "Speicher als Vorlauf" im Pulldownmenü "Datei"

Description

To simplify the start of a new project, you can work with your own customized preliminary drawings. The last project is often used as a basis and unnecessary content is deleted. This tidy and appropriately prepared drawing only needs to be saved in the directory of the preliminary drawings.

To make it quicker to create your own preliminary drawings, the "Save as preliminary" function has been added to SPIRIT 2024. This saves a copy of the current drawing in the directory for preliminary drawings specified in the system settings. The correct storage folder no longer needs to be searched for. Either the standard storage path or a path defined for the office is used.

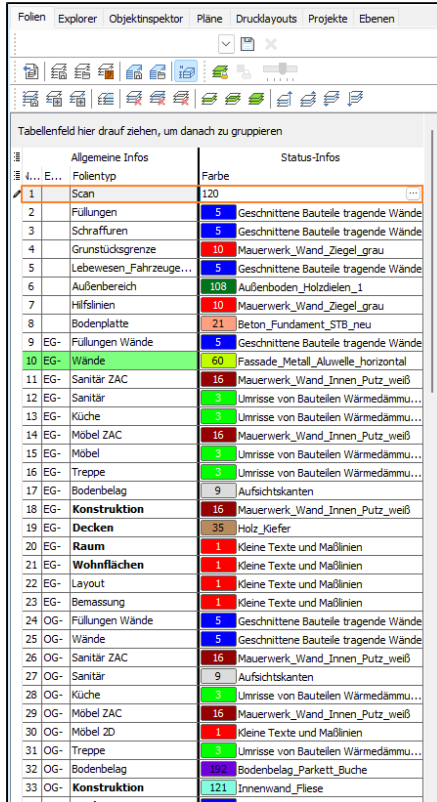
Please note that the drawing should first be reorganized in order to clean it up. This is not absolutely necessary and the new preliminary run can also be saved directly under any name.

Benefit

- ✓ **Create your own pre-processes more quickly:** Simply save the currently open drawing as a pre-process.
- ✓ **The filing path does not have to be searched for:** Either the standard filing path or a path defined for the office is used.

Adjustments - Display of color values

Interface overhauled in some places thanks to updated developer tools



Tabellenfeld hier drauf ziehen, um danach zu gruppieren

Allgemeine Infos		Status-Infos
4... E...	Folientyp	Farbe
1	Scan	120
2	Füllungen	5 Geschnittene Bauteile tragende Wände
3	Schraffuren	5 Geschnittene Bauteile tragende Wände
4	Grundstücksgrenze	10 Mauerwerk_Wand_Ziegel_grau
5	Lebewesen_Fahrzeuge...	5 Geschnittene Bauteile tragende Wände
6	Außenbereich	108 Außenboden_Holzdielen_1
7	Hilfslinien	10 Mauerwerk_Wand_Ziegel_grau
8	Bodenplatte	21 Beton_Fundament_STB_neu
9	EG- Füllungen Wände	5 Geschnittene Bauteile tragende Wände
10	EG- Wände	60 Fassade_Metall_Alufolie_horizontal
11	EG- Sanitär ZAC	16 Mauerwerk_Wand_Innen_Putz_weiß
12	EG- Sanitär	3 Umrisse von Bauteilen Wärmedämmu...
13	EG- Küche	3 Umrisse von Bauteilen Wärmedämmu...
14	EG- Möbel ZAC	16 Mauerwerk_Wand_Innen_Putz_weiß
15	EG- Möbel	3 Umrisse von Bauteilen Wärmedämmu...
16	EG- Treppe	3 Umrisse von Bauteilen Wärmedämmu...
17	EG- Bodenbelag	9 Aufsichtskanten
18	EG- Konstruktion	16 Mauerwerk_Wand_Innen_Putz_weiß
19	EG- Decken	35 Holz_Kiefer
20	EG- Raum	1 Kleine Texte und Maßlinien
21	EG- Wohnflächen	1 Kleine Texte und Maßlinien
22	EG- Layout	1 Kleine Texte und Maßlinien
23	EG- Bemassung	1 Kleine Texte und Maßlinien
24	OG- Füllungen Wände	5 Geschnittene Bauteile tragende Wände
25	OG- Wände	5 Geschnittene Bauteile tragende Wände
26	OG- Sanitär ZAC	16 Mauerwerk_Wand_Innen_Putz_weiß
27	OG- Sanitär	9 Aufsichtskanten
28	OG- Küche	3 Umrisse von Bauteilen Wärmedämmu...
29	OG- Möbel ZAC	16 Mauerwerk_Wand_Innen_Putz_weiß
30	OG- Möbel 2D	1 Kleine Texte und Maßlinien
31	OG- Treppe	3 Umrisse von Bauteilen Wärmedämmu...
32	OG- Bodenbelag	192 Bodenbelag_Parkett_Buche
33	OG- Konstruktion	121 Innenwand_Fleise

SPIRIT 2024: Darstellung der Farbwerte im andockbaren Dialog "Folien"

Description

Some development tools have been updated for SPIRIT2024. As a result, the user interface has been revised in some areas.

This means that both the color number and the color name can be displayed in all places where color values are displayed and defined.

Z. For example, the color can be changed in the object inspector or in the dockable slides dialog by directly entering the color number.

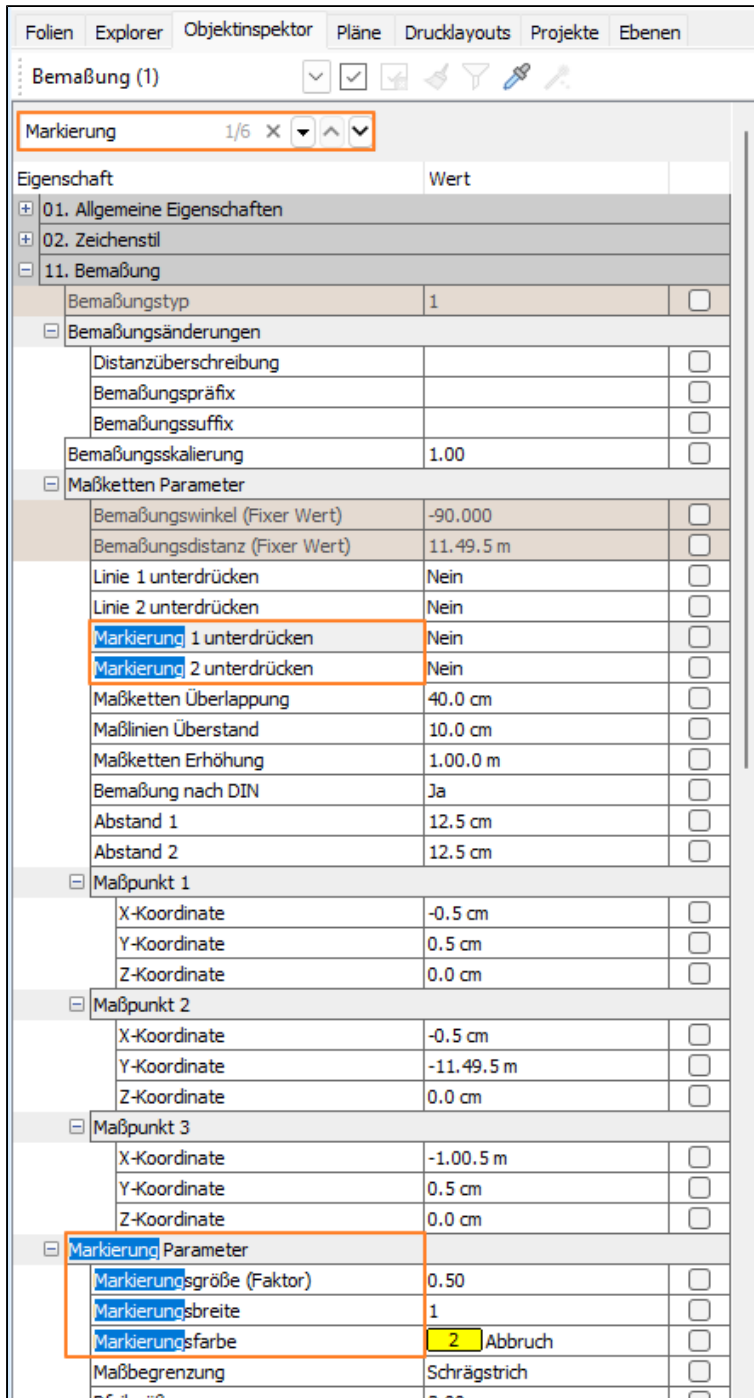
The selection via the color palette is of course still possible.

Benefit

- ✓ **Better readability:** The current color of an element is always displayed with the number and name.
- ✓ **Easier editing:** The color number can be entered directly.

Adjustments - Search function available in tables

Compact search function added to several tables in SPIRIT



SPIRIT 2024: Neue Suchfunktion im andockbaren Dialog "Objektinspektor"

Description

Some development tools have been updated for SPIRIT2024. As a result, the user interface has been revised in some areas.

A compact search field is now available in various places where information is displayed in table form. This search field can be used to search for both properties and values of the currently selected element.

The number of hits is displayed and the locations found are highlighted in color. The hits can be switched through in sequence using two arrow keys.

Individual properties can be found quickly, especially for elements with a large number of object properties.

The search terms used are saved during the session until they are deleted or SPIRIT is terminated.

This search field is currently available at the following locations:

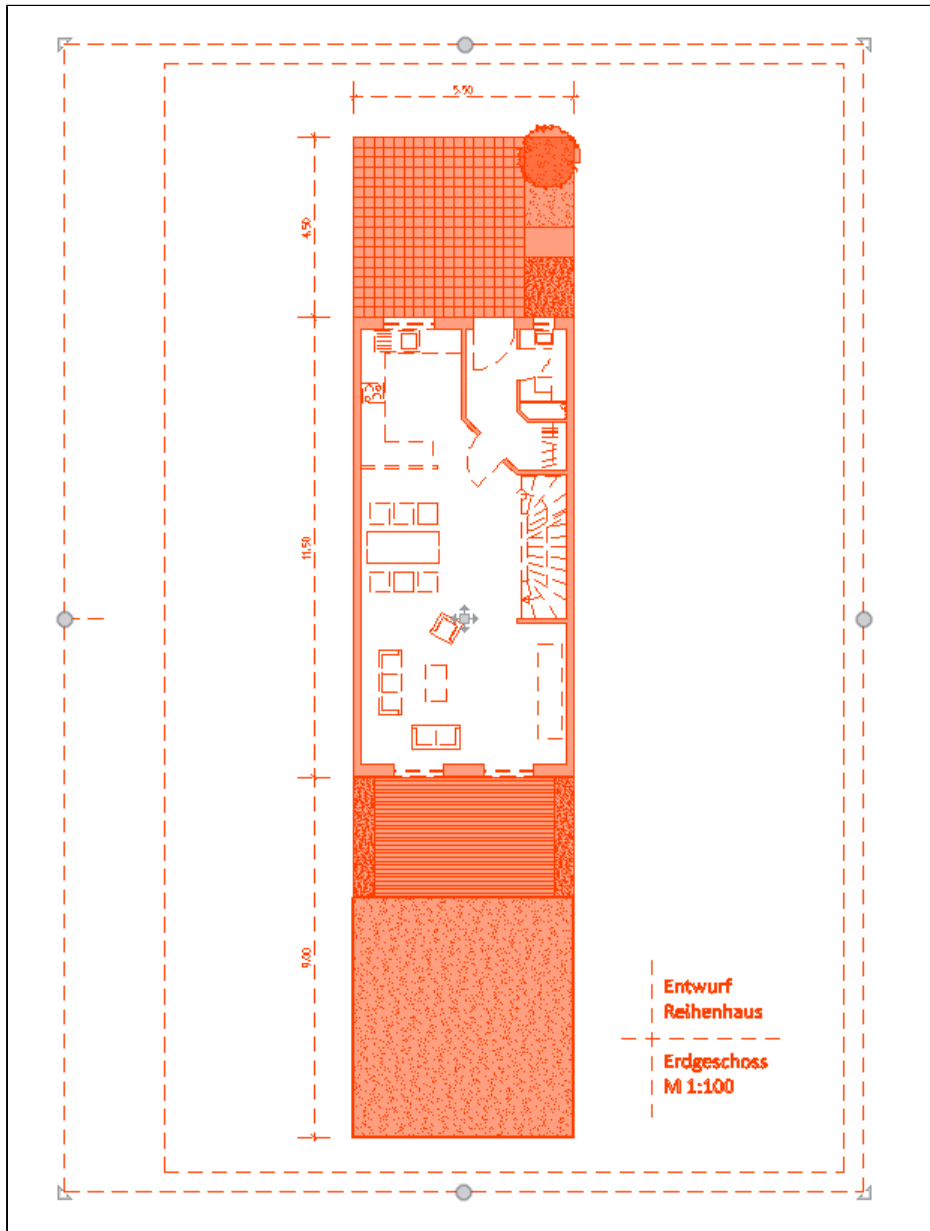
- ✓ Dockable "Object inspector" dialog
- ✓ Dockable "Slides" dialog
- ✓ Dockable "Plans" dialog
- ✓ Dockable "Print layouts" dialog
- ✓ File manager
- ✓ Reference manager

Benefit

- ✓ **Better overview in plan list:** Search the plan list quickly, e.g. by plan number, plan author or plan type
- ✓ **Quick search for object properties:** For objects with many properties, individual properties can be found quickly.
- ✓ **Targeted editing of specific properties in the OI:** If the name of the properties is known, they can be found and edited quickly.

Working with references - reference point when setting down

More flexibility when sending a reference.



SPIRIT 2024: additional object handles for reference mark new reference points when placing at the edge center

Description

The references in SPIRIT have a reference point at all four corners in addition to the center point. When a reference is inserted, it is initially attached to the mouse cursor; the reference point is the center of the reference.

The reference point can be changed using the F3 function key and the reference then changes its item at the cursor along the four corner reference points.

Four additional reference points have now been added. As with symbols, the center point between the corner points is now also offered as a reference point.

In combination with dynamic rotation, this provides many additional options for placing references.

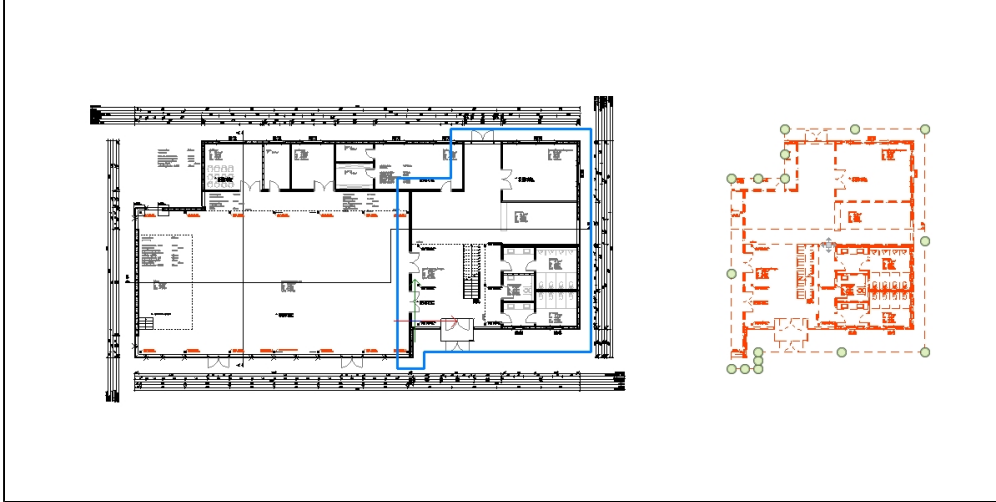
These new "reference corners" are also available when placing room and element stamps. However, no additional object handles are displayed here when selecting.

Benefit

- ✓ **Four additional set-off points:** In addition to the center point and the 4 corner points, edge centers can also be selected as "reference corners".
- ✓ **Also applies to stamps:** These new "reference corners" are also available for space and element stamps.

Working with references - Free contour

More flexibility when working and positioning references.



SPIRIT 2024: Reference with free contour

Description

Working with references offers many possible applications. If only parts of a reference are to be displayed, a reference can also be detached.

Previously, it was only possible to crop a reference with a rectangular clip frame. Due to these restrictions, cover surfaces had to be used to display other contours. SPIRIT 2024 can also be used to cut out a reference with a free contour. This contour can be edited like a polyline, edges can also be converted into arcs.

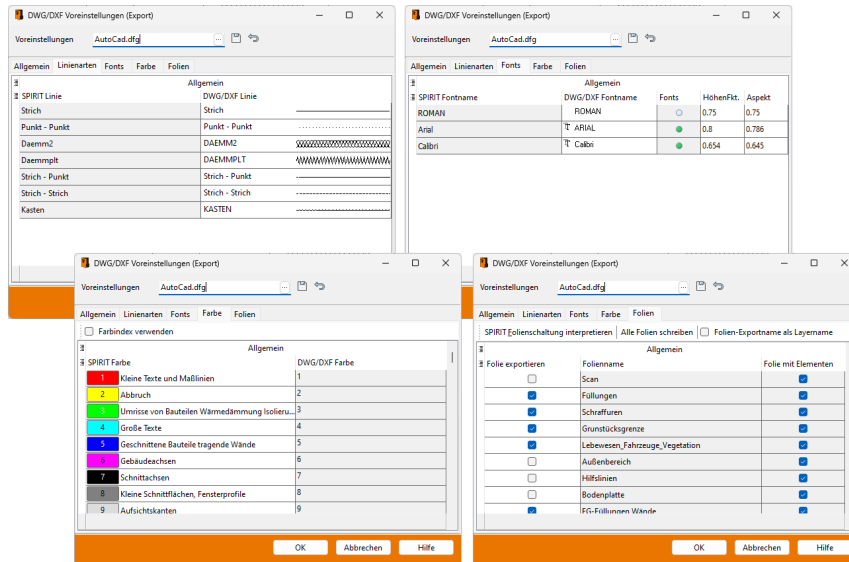
This provides a new tool for more flexibility in the plan layout.

Benefit

- ✓ **Free contours when cropping references:** the cropped area is no longer limited to a rectangle.
- ✓ **Curves are also possible:** edges can also be converted into arcs.
- ✓ **Edit like a polyline:** the contour can be subsequently edited like a polyline. Improved rotation of cropped references: the visible area of the cropped reference can be Reference is also retained when turning.
- ✓ **No more masking areas:** no more masking areas are required in the layout to hide a free contour.

DWG import and export - New dialog

Many small improvements in the export dialog.



SPIRIT 2024: Revised dialogs when exporting to DWG

Description

The dialogs for DWG import and DWG export have been revised. As in other dialogs, tables are now used whose contents can be customized. The order and width of individual columns can be changed, content that is not required can be hidden and filter functions are available. Editable fields are highlighted in white, fields that cannot be changed are grayed out.

Individual properties are now assigned directly in the line of the respective property. When importing, it is now also possible to enter the color number directly and assign it in this way. Previously, only the color name was displayed here.

Individual general options have been added to the appropriate submenus as part of these changes.

These changes are intended to make the settings for data exchange via DWG/DXF more intuitive and faster.

Nutzen

- ✓ **More intuitive and faster operation:** The settings for data exchange should be easier to make.
- ✓ **Better overview and customization options:** The dialogs are more uniform and can be adapted to your own needs.

DWG import and export - Export of SPIRIT components

Optimized 2D representation in DWGs and optimized reimport.

Description

When exchanging data via DWG, SPIRIT components are converted into symbols. These symbols previously contained a large number of drawing elements. This becomes clear when these symbols are resolved for further processing.

When re-importing such elements into SPIRIT and subsequently decomposing the symbols, the hatching of walls, for example, was also dissolved.

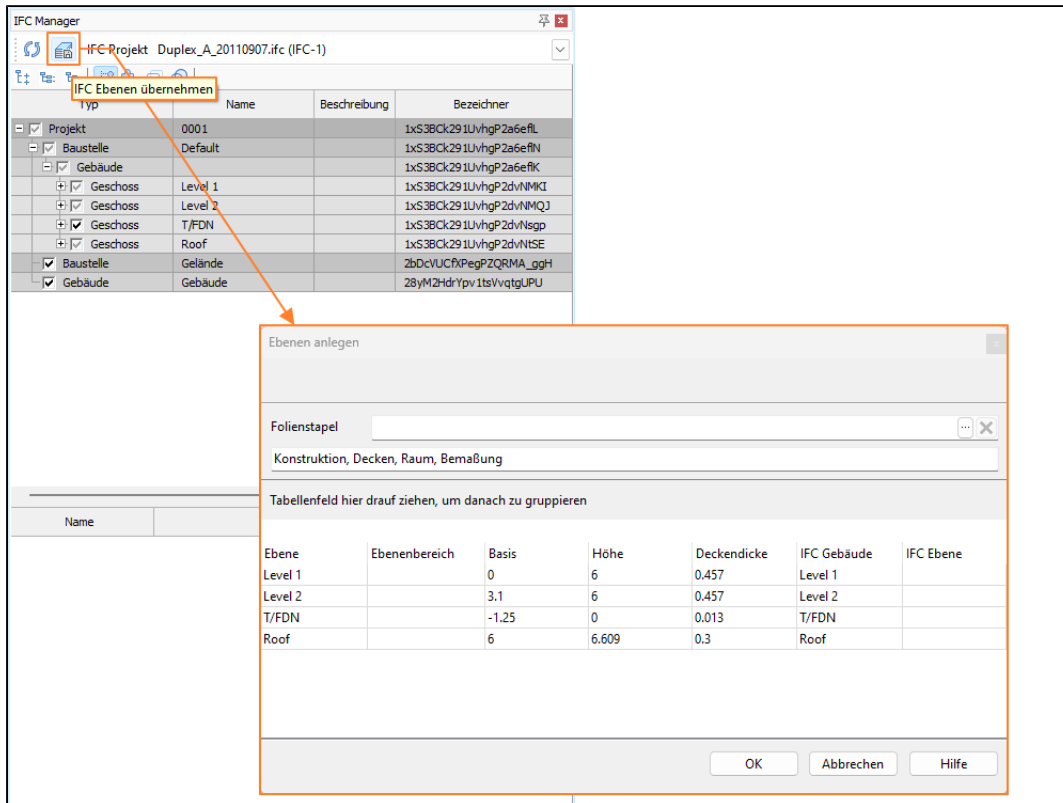
With SPIRIT 2024, the export of components has been revised and the complexity of the symbols generated has been reduced. Elements that are not required for the display are no longer created and wall hatching remains as hatching.

Benefit

- ✓ **Reduced complexity of SPIRIT components during export:** Number of exported drawing elements for SPIRIT components reduced during export to DWG.
- ✓ **Improved handling of reimported SPIRIT components:** SPIRIT components reimported from a DWG are easier to process after disassembly.

IFC - Transfer layer structure

Transferring the storey heights from the referenced IFC file



SPIRIT 2024: Create layers in SPIRIT based on an imported IFC file

Description

Projects can be imported into SPIRIT as a reference via the IFC interface. This IFC reference can be overlaid with your SPIRIT model. If there is no SPIRIT model yet, SPIRIT 2024 can be used to automatically create a level structure based on an imported IFC model.

The slides required for the architecture system are created or an already defined slide stack can be used. The heights are initially derived from the IFC model and the level designations are adopted.

These values can be checked in a new dialog and adjusted if necessary. Once the level structure has been created, you can work there as usual in the SPIRIT architecture system. Additions to the IFC model can then be exported and forwarded via the IFC interface.

Nutzen

- ✓ **Transfer level structure from IFC:** Directly create a level structure in SPIRIT based on the height information of an imported IFC.
- ✓ **Collaborate via IFC:** Create additions or new plans based on an IFC and export them via the same interface.

Changes and adjustments SPIRIT 2024

Your feedback from the field.

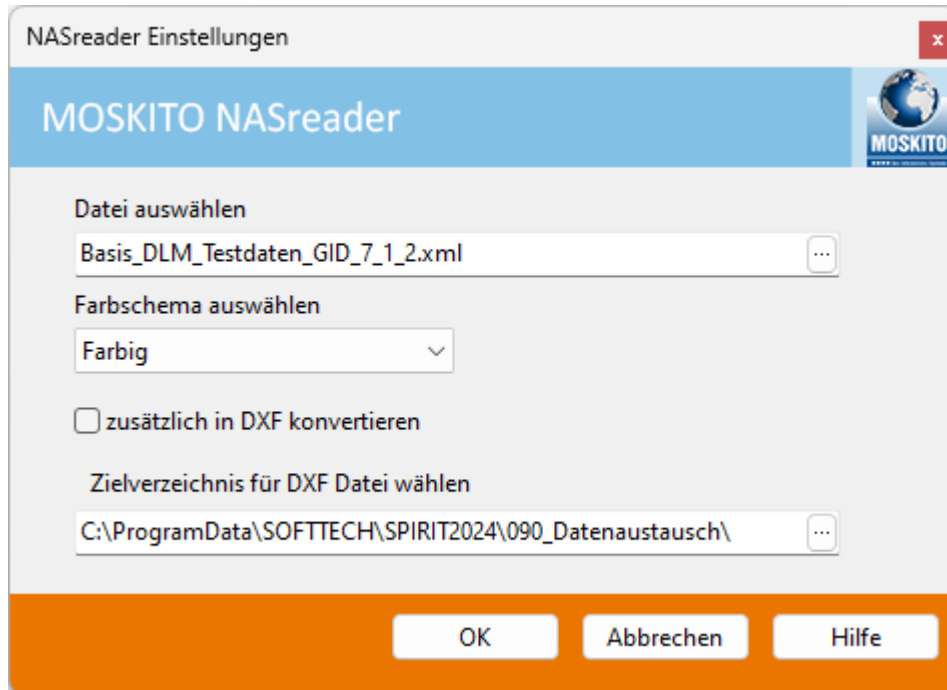


The current version incorporates numerous customer requests that we have received through many discussions with our sales, support and product management teams. Here you will find a list of some of the items that we have provided in the current development cycle:

- ✓ DWG import and export - The handling of room stamps during DWG export and import has been edited.
- ✓ DWG import and export - The import of splines has been improved. DWG import and export - The import of MTexts has been improved.
- ✓ Working with references - Context menu - The context menu of the selected references has been slightly revised and is now easier to understand.
- ✓ The function for selecting plans (views) within a reference is now visually and clearly separated from the functions belonging to the drawing.
- ✓ Working with references - The display of the clip frame has been revised.
- ✓ Working with references - In the reference manager, the slide number has been added to the slide selection of the respective reference.
- ✓ Working with references - Released references can be changed via the object inspector.

Add-on NASreader - GeoInfoDok Version 7.X *

MOSKITOT NASreader - Convert ALKIS-NAS data stress-free.



SPIRIT 2024: MOSKITO NASreader

Description

Better performance thanks to a new soul. With its acadALKIS-ME, MOSKITO has introduced the latest NAS import of the next generation. In addition to acadALKIS-ME, its little brother, the NASreader, has also been completely reimplemented. This now also delivers better results and much faster. With the SPIRIT 2024 version, the latest version of the NASreader is also available as an additional module. Thanks to the NASreader, GeoInfoDok 7.1 files can also be read and converted in SPIRIT.

With the Moskito NASreader, you no longer have to scan in cadastral extracts and trace them by hand or convert and edit the PDF. The standards-based exchange interface (NAS) was defined as part of the introduction of the AFIS, ALKIS and ATKIS geoinformation systems (AAA model). This data interface is used to exchange geoinformation. In order to meet the new requirements of the NAS data format, the two companies MOSKITO GIS GmbH and SOFTTECH GmbH have agreed on a cooperation and developed a joint module for SPIRIT. The NAS converter, which is based on Moskito technology, integrates as a module in the CAD solution SPIRIT.

Import cadastral and site plans directly

With the Moskito NASreader, cadastral extracts no longer have to be scanned and redrawn or the PDF of the cadastral plan converted and edited. DWG/DXF extracts are also being issued less and less

by the cadastral offices. With the NASreader, you can convert the NAS file for your cadastral extract easily and directly to and from SPIRIT. By using the converter from Moskito GIS, both the structures and the graphical characteristics from the NAS file are converted quickly and with very high quality.

- ✓ NAS inventory data extracts can be selected and converted within SPIRIT. The NAS data is converted quickly and reliably.
- ✓ Different color schemes (colored/ALKIS/area) are available for the cadastral and site plans.
- ✓ Different usage units are switched in SPIRIT using slides. Slides are grouped according to use and type.
- ✓ Color fillings can be switched on and off.
- ✓ Geometric objects such as polylines, lines, points, fill areas and texts are created during conversion.
- ✓ Cadastral and site plans can be referenced in SPIRIT drawings.

*** Information**

These are paid add-ons for SPIRIT. You can find detailed information on the extensions at www.softtech.de.

Add-on Fire protection planning with SPIRIT 2024 *

SPIRIT for fire protection with over 500 symbols



SPIRIT BrandSP 2024: updated fire protection symbols

Description

The intelligent and DIN-compliant CAD software for fire protection. With SPIRIT and the BrandSP extension, projects relating to fire protection and beyond can be successfully completed. SPIRIT provides a wide range of functions for creating escape and rescue plans, fire protection plans and fire department plans.

Some symbols from DIN14095 and DIN14034-6 have been changed and some new symbols have been added. As part of the publication of SPIRIT 2024, the contents of BrandSP have been updated accordingly.

Benefit

✓ **Icons up to date:** The icons for SPIRIT BrandSP have been updated and supplemented.

* Information

These are paid add-ons for SPIRIT. You can find detailed information on the extensions at www.softtech.de.